

Dominator[®] PROPANE

Mechanics Body



► Dominator Propane Body

The versatile IMT® Dominator propane mechanics body saves time and money by helping you transport and handle tanks with greater efficiency. Featuring the powerful IMT 6000 Series telescopic crane integrated with a durable Dominator body, the truck is ideal for safely hauling, loading, and unloading one 1000-gallon tank, two 500-gallon tanks or up to 13 100-pound tanks. With many configuration possibilities, ample storage, and optimized tools and parts access, the Dominator propane body delivers everything you need to maximize productivity and boost your bottom line.



Standard Features

- Body rating — 39,000 ft-lb (6.7 tm)
- Crane capacity — 6000 lb (2721.6 kg)
- Automotive style electrical harnessing
- Storage capacity of 76.2 cu ft
- 6" side and rear panels
- Compartment coating
- Central power distribution point

Options

- Drawers and drawer sets
- Standard adjustable shelves
- 3" H (7.6 cm) divided adjustable shelves
- Fold-down rack
- Pipe rack kit
- Loadgate
- Pull out bins
- Tank brackets
- Bolt-on underbody tool boxes
- 16" sidepack depth
- Stabilizer — manual and hydraulic



Load Bed

Spacious bed can accommodate one 1000-gallon tank, two 500-gallon tanks or up to 13 100-pound tanks.



Workbench

Large, usable workspace with workbench bumper; vise and vise plates available to meet specific needs.



Removable Side Rail

6-inch side and rear rails are easily removable to allow efficient tank loading and unloading.

Specifications

11 ft

Body Rating	39,000 ft-lb (6.7 tm)
Body Weight	3700 lb (1678.3 kg)
Body Width (including rain eaves)	96" (244 cm)
Sidepack Height	44" (112 cm)
Sidepack Depth	22" (56 cm)
Cargo Deck Width	71.5" (182 cm)
Step Bumper Depth	12" (30.5 cm)
Tailgate Height	6" (15.2 cm)
Total Storage Capacity	76.2 cu ft (2.2 m ³)
Angle of Departure	10° (0.17 rad)
Min. Chassis GVWR	17,500 lb (7938 kg)
Workbench Depth	12" (30.5 cm)
Tank Handling	1–1000 gal, 2–500 gal, 13–100 lb

► 6000 Series Telescopic Crane

Let our telescopic cranes take on the heavy lifting. The IMT 6000 Series telescopic crane has a maximum lifting capacity of 6000 lb (2721.6 kg) and a horizontal boom reach of 21' 8" (6.6 m). Featuring a penta boom design, this crane is built for strength and control, and when combined with an IMT Dominator propane mechanics body creates the ultimate service and maintenance truck.

Specifications

	22' Boom
Crane Rating*	39,000 ft-lb (6.7 tm)
Max. Capacity	6000 lb (2721.6 kg)
Max. Horizontal Reach (with flip sheave up)	22' 6" (6.9 m)
Max. Horizontal Reach (with flip sheave down)	21' 8" (6.6 m)
Max. Capacity @ Max. Reach	1700 lb (771.1 kg)
Fully Retracted	11' 11" (3.6 m)
Hydraulic Extensions	59.7" (151.6 cm) 57.2" (145.3 cm)
Lifting Height (with flip sheave down)	23' 10" (6.5 m)
Crane Weight	1785 lb (809.7 kg)
Crane Storage Height	40.6" (103.1 cm)
Center of Gravity	
Horizontal from CL of rotation	42" (106.7 cm)
Vertical from bottom of crane base	19.6" (49.8 cm)
Required Mounting Space for Crane Base	20" x 21" (50.8 x 53.3 cm)
Optimum Pump Capacity	10 – 12 gpm (37.9 – 45.4 L/min)
Tie-Down Bolt Pattern	14.75" x 14.75" (37.5 x 37.5 cm)
Rotational Torque	9000 ft-lb (1.3 tm)
Main Boom Elevation Speed	12 sec
Extension Boom Extend Speed	33 sec

*Crane rating (ft-lb) is the rated load (lb) x the respective distance (ft) from centerline of rotation with all extensions retracted and lower boom in horizontal position.

Standard Features

- Boom stow warning system
- Fully proportional control valve



Radio Remote Control

The capacity indicator lights on our pistol grip radio remote control tell the operator how much crane lifting capacity has been used. If the crane reaches the overload point, an automatic safety feature slows the crane to 50 percent.



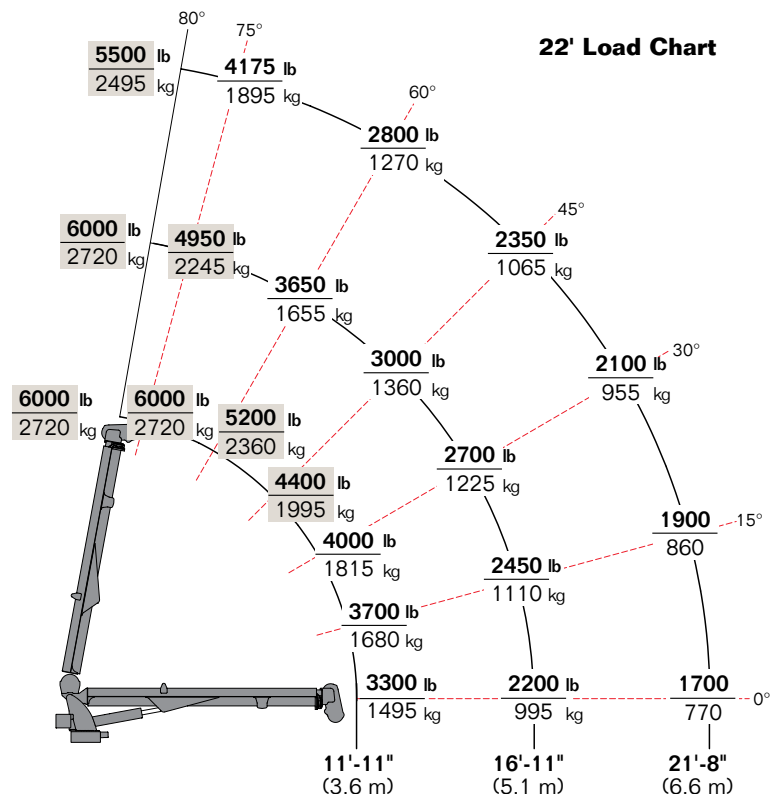
Flip Sheave

Our unique flip sheave allows operators to work in tighter work areas by reducing the boom tip profile height by 8" (20.3 cm).



Penta Boom Design

Different material thickness to address structural requirements, while controlling the weight of the crane.



- Maximum one-part line weight is 4300 lb (1950 kg)
- The weight of load-handling devices is part of the load lifted and must be deducted from the rated capacity

Tank Hauling Capacity

- One 1000-gallon (3785.4 L) propane tank
- Two 500-gallon (1892.7 L) propane tank
- Up to 13 100-pound (45.4 kg) propane cylinders

Body Substructure

- 10-gauge galvanized steel
- Integral crane box
- Front and rear stabilizer housings

Body Materials

- Sidepacks constructed of 10-gauge and 12-gauge galvanized steel
- Deck plate is 1/8" (0.32 cm) steel
- Workbench is constructed of both galvanized and cold-rolled steel

Electrical System

- Central power distribution point
- Automotive-style harnesses protected by overbraid
- White wire has circuit function printed every 3" (7.6 cm)

Doors

- Constructed of 14-gauge galvanized steel
- Internal formed eaves and hemmed edges
- 3-point latches with locking rotary T-handle
- Stainless steel hinges with composite washers

Hydraulic System

- Open-centered, full pressure system
- System requires 10 gpm (37.9 L/min) optimum oil flow at 3000 psi (206.8 bar)
- Fully proportional control valve with "pistol grip" radio remote control system
- Includes radio elimination cable, hydraulic oil reservoir, and suction and return line filters

Stabilizer Weights

- Left front drop down 24 lb (10.9 kg)
- Right front manual out / drop down 82 lb (37.2 kg)
- Rear manual out / power down 345 lb (156.5 kg)
- Rear power out / power down 370 lb (167.8 kg)



Nothing Says Commitment Like The Diamond.™

IMT has been meeting the needs of our customers for over 50 years and none of it would have been possible without a distributor network that's second to none. IMT distributors offer fast, knowledgeable service and the ability to help customers find the right product for every application. When you're looking for reliable equipment and dependable service, remember IMT.



An Oshkosh Corporation Company

Iowa Mold Tooling Co., Inc.
500 Highway 18 West
Garner, Iowa 50438
800-247-5958 • www.imt.com

IMT reserves the right to make changes in engineering, design, and specifications; add improvements; or discontinue manufacturing at any time without notice or obligation. IMT, the IMT logo, Dominator and NOTHING SAYS COMMITMENT LIKE THE DIAMOND are registered trademarks or trademarks of Iowa Mold Tooling Co., Inc., Garner, IA, USA.
© 2014 Iowa Mold Tooling Co., Inc. All Rights Reserved.

04/14